



# District® Youth Perfect Tri® Long Sleeve Hoodie DT139Y

A lightweight tri-blend essential that's perfect all year round.

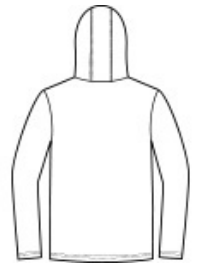
- 4.5-ounce, 50/25/25 poly/combed ring spun cotton/rayon, 32 singles
- Tear-away label
- Shoulder to shoulder taping

### CARE INSTRUCTIONS

Machine wash cold with like colors. Non-chlorine bleach when needed. Tumble dry low. Cool iron if necessary.



front



back

### HOW TO MEASURE



#### CHEST WIDTH

Measure under the arm and around the fullest part of the chest with arms down, keeping tape horizontal.

### SIZE CHART

	XS	S	M	L	XL
Size	4/5	6/8	10/12	14/16	18/20
Chest	22-24	25-27	28-30	30-32	32-34

### COLOR INFORMATION

Please note: PMS code information is shown only when an exact match is available.



Black Frost  
PMS 426C



Deep Royal  
PMS 7687C



Grey Frost  
PMS COOL GREY  
11C



Navy Frost  
PMS 2379C



White